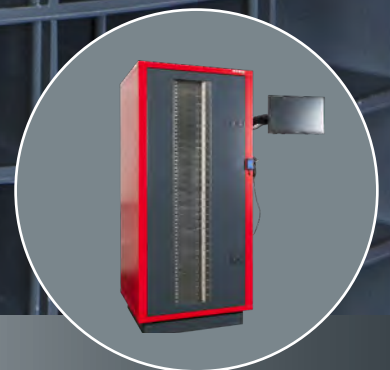


storetec
systems

StoreManager **simply+**

THE STANDARD MODEL FOR SAVING TIME AND MONEY



INNOVATIVE SECURE SYSTEMS

THE RIGHT SYSTEM FOR EVERY SET OF REQUIREMENTS



Technical data

| | |
|-------------------------|--|
| Variants: | StoreManagers ^{simply+} – with up to 720 compartments for individual removal (available as main system and expansion system without PC) |
| Dimensions (L x W x H): | 800 mm x 900 mm x 2,000 mm |
| Weight: | Approx. 260 kg |
| Power supply: | 230 V / 50 Hz |
| Connection: | Schuko plug |
| Network connection: | LAN socket / GSM module |
| Operating system: | Windows (<i>latest version</i>) |
| Database: | SQL Server (<i>latest version</i>) |
| Maintenance: | Maintenance-free hardware |
| Emergency access: | Lockable service doors on the front enable manual access in exceptional situations → 100% availability |

1. Great usability & security

Individual access control

- Login using RFID transponder or fingerprint sensor (existing systems can be adapted)
- Individual, freely definable user rights



Easy menu control through a touchscreen

- Menu guide can be individually configured
- Different menu structures and special solutions are possible (e.g. display as a picture menu)
- User-specific menu language

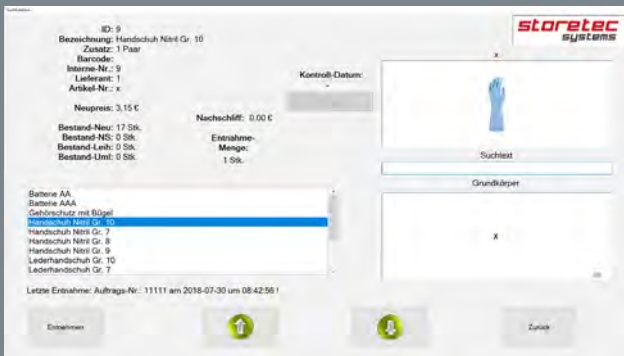


Structured and easy administration

- Management of new, used, and loan items
- Inventory warning and automatic ordering or order suggestion when inventory levels fall below minimum quantity

Secure individual removal

- Fast access time (approx. 10 seconds)
- No deviation from nominal to actual inventory
- Allocation of the removals to cost centers, order or machine numbers

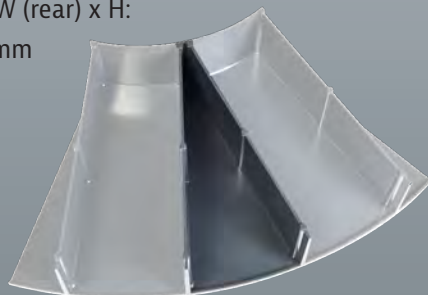


2. Compartment carousel

Depth always 195 mm:

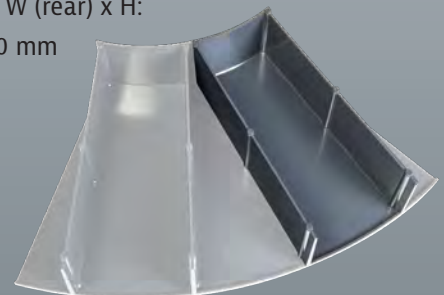
Small:

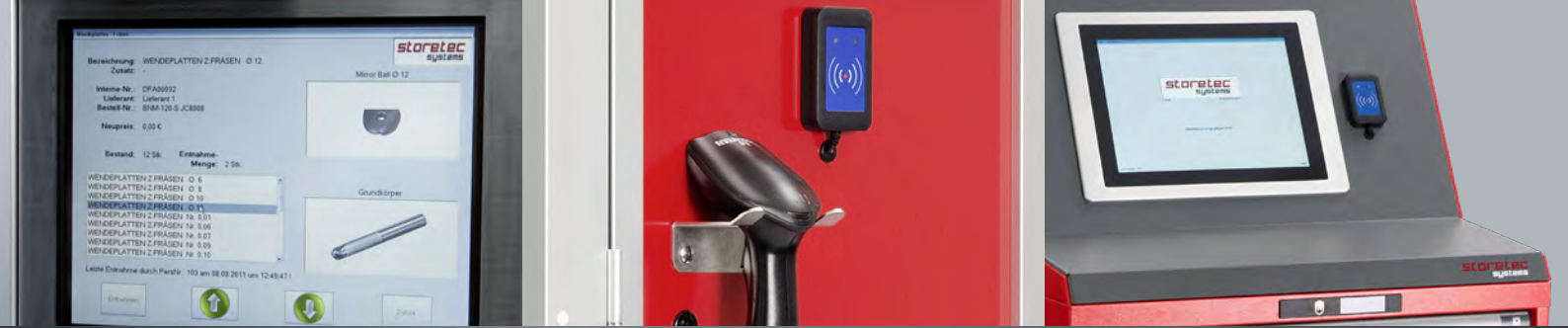
W (front) x W (rear) x H:
87 x 6 x 50 mm



Large:

W (front) x W (rear) x H:
87 x 68 x 50 mm





storetec
systems

Storetec Systems GmbH | Trientlgasse 45 | 6020 Innsbruck / Austria | office@storetec-systems.com | www.storetec-systems.com



INNOVATIVE SECURE SYSTEMS